

Pure Car / Truck Carrier

4000RT TYPE

Ship's Name	Built	IMO No.	Flag	Ship's Name	Built	IMO No.	Flag
常安口 CHANG AN KOU	1999	9177026	P.R.CHINA	常荣口 CHANG RONG KOU	2000	9177038	P.R.CHINA



MAIN DATA

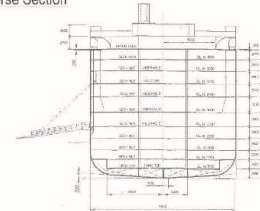
Classification	★ CSA Car Carrier ★ CSM AUT-0; CMS; SCM			Depth to Main Deck	28.00 m
GRT/NRT	37,237 / 11,172 mt			Speed	19.50 kn
Deadweight	12,780 mt			Capacity	4,100 RT
Max Draft (Summer)	8.77 m			Liftable Deck	3
LOA	176.70 m				
Breadth Moulded	31.10 m				

* All above details are in good faith but without guarantee.

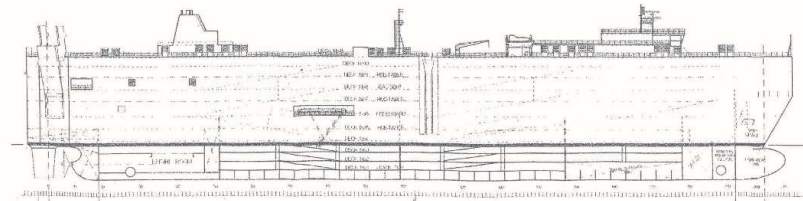
* All details including speed are given in good faith and are "about" and are given without guarantee. They must not be used as basis for charterparties or contracts without COSCO SHIPPING SPECIALIZED CARRIERS CO., LTD.'s explicit written authority.



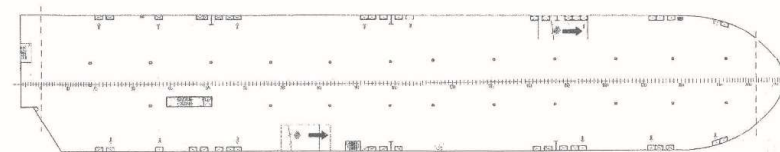
Transverse Section



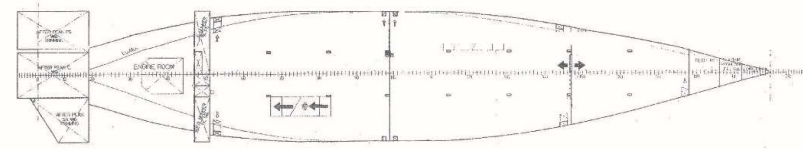
Side View



Deck 10 (typical)



Deck 3 (typical)



Pure Car / Truck Carrier

5000RT TYPE

Ship's Name	Built	IMO No.	Flag	Ship's Name	Built	IMO No.	Flag
中远盛世 COSCO SHENG SHI	2011	9454711	PANAMA	中远腾飞 COSCO TENG FEI	2011	9454723	PANAMA



MAIN DATA

Classification ★ CSA Car Carrier
★ CSM AUT-0, CMS, SCM

GRT/NRT 51,699 / 15,510 mt

Deadweight 14,760 mt

Max Draft (Summer) 9.40 m

LOA 182.80 m

Breadth Moulded 32.20 m

Depth to Main Deck 21.41 m

Speed 19.05 kn

Capacity 5,276 RT

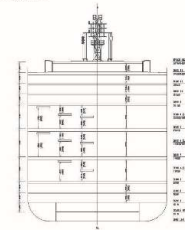
Liftable Deck 3

*All above details are in good faith but without guarantee.

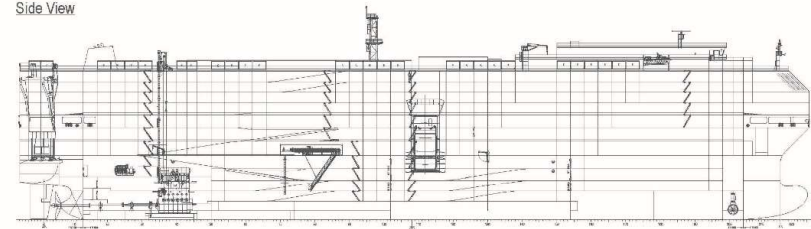
*All details including speed are given in good faith and are "about" and are given without guarantee. They must not be used as basis for charterparties or contracts without COSCO SHIPPING SPECIALIZED CARRIERS CO., LTD.'s explicit written authority.



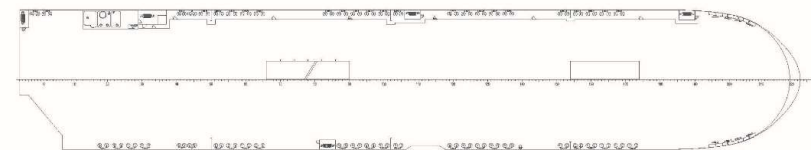
Transverse Section



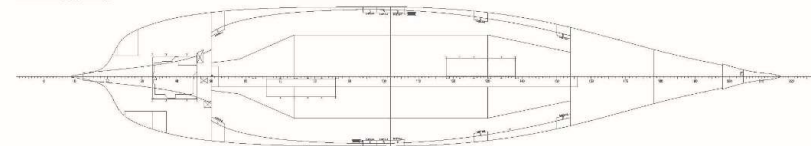
Side View



Deck 11 (typical)



Deck 1 (typical)



Pure Car / Truck Carrier

5000RT TYPE

Ship's Name	Built	IMO No.	Flag
玉衡先锋 YU HENG XIAN FENG	1997	9166895	P.R.CHINA



MAIN DATA

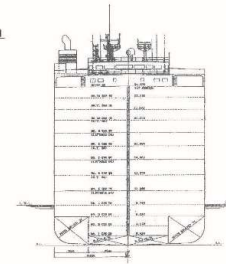
Classification	★ CSA Car Carrier ★ CSM AUT-0; CMS; SCM		
GRT/NRT	53,240 / 15,972 mt		
Deadweight	13,420 mt	Depth to Main Deck	34.50 m
Max Draft (Summer)	9.22 m	Speed	19.00 kn
LOA	180.00 m	Capacity	5,380 RT
Breadth Moulded	32.26 m	Liftable Deck	3

* All above details are in good faith but without guarantee.

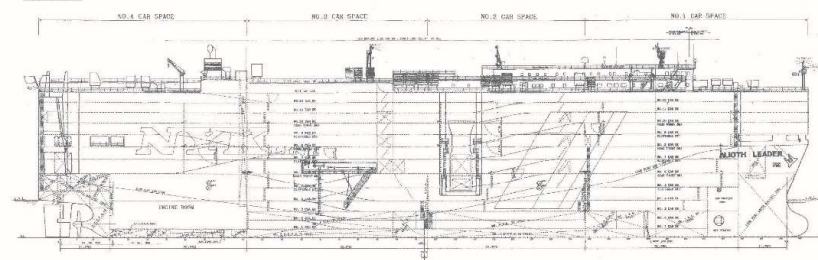
* All details including speed are given in good faith and are "about" and are given without guarantee. They must not be used as basis for charterparties or contracts without COSCO SHIPPING SPECIALIZED CARRIERS CO., LTD.'s explicit written authority.



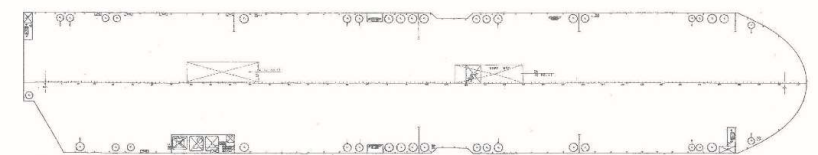
Transverse Section



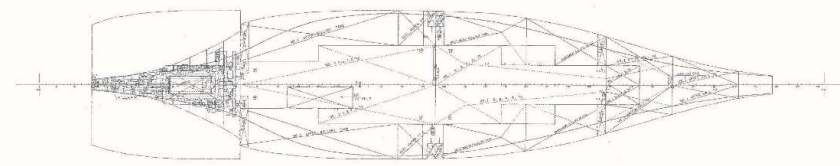
Side View



Deck 12 (typical)



Deck 1 (typical)

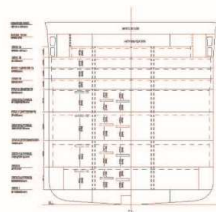


Pure Car / Truck Carrier 7000RT TYPE

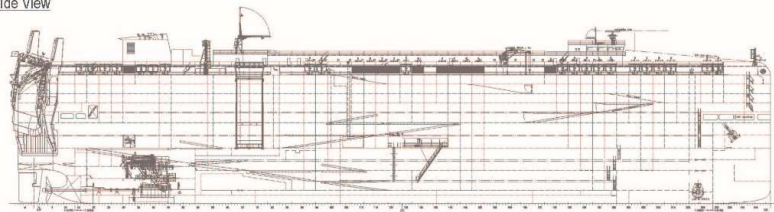
MAIN DATA

Deadweight at Designed Draft	Abt 11,000 mt
Deadweight at Scantling Draft	Abt 18,700 mt
Designed Draft	8.60 m
Scantling Draft	10.00 m
LOA	199.90 m
Breadth Moulded	38.00 m
Depth to Main Deck	14.80 m
Speed	19.00 kn
Capacity RT	Abt 7,000
Liftable Deck	4

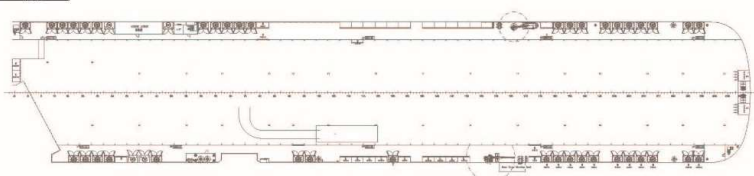
Transverse Section



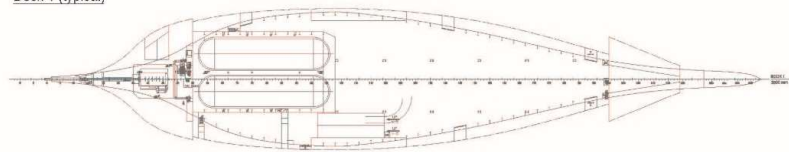
Side View



Deck 12 (typical)



Deck 1 (typical)

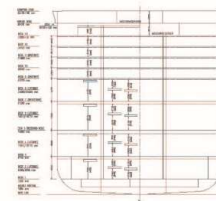


Pure Car / Truck Carrier 7500RT TYPE

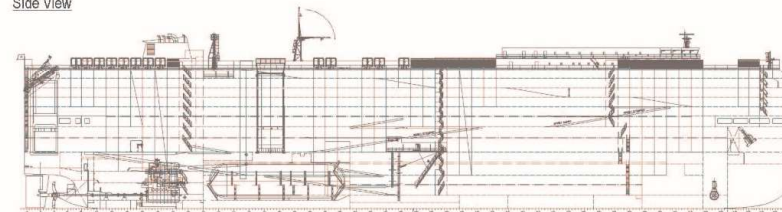
MAIN DATA

Deadweight at Designed Draft	Abt 11,000 mt
Deadweight at Scantling Draft	Abt 18,500 mt
Designed Draft	8.65 m
Scantling Draft	10.00 m
LOA	199.90 m
Breadth Moulded	38.00 m
Depth to Main Deck	14.80 m
Speed	18.50 kn
Capacity RT	Abt 7,514
Liftable Deck	4

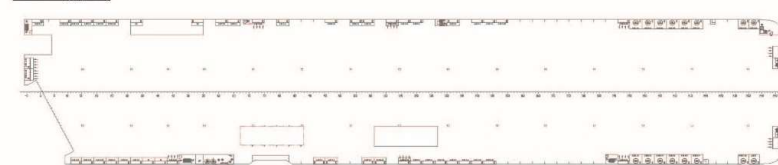
Transverse Section



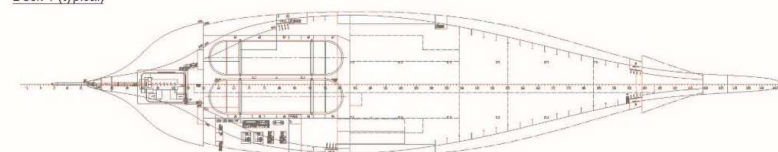
Side View



Deck 12 (typical)



Deck 1 (typical)



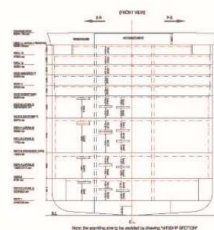
Pure Car / Truck Carrier

8600RT TYPE

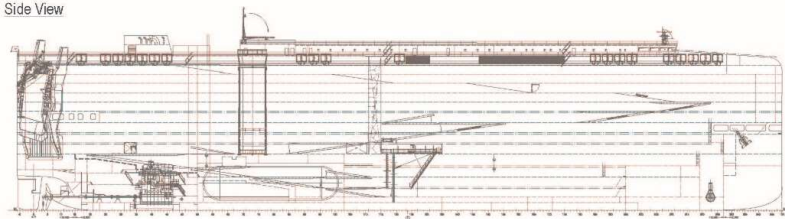
MAIN DATA

Deadweight at Designed Draft	Abt 13,200 mt
Deadweight at Scantling Draft	Abt 20,000 mt
Designed Draft	9.20 m
Scantling Draft	10.40 m
LOA	199.90 m
Breadth Moulded	38.00 m
Depth to Main Deck	14.80 m
Speed	19.00 kn
Capacity RT	Abt 8,600
Liftable Deck	5

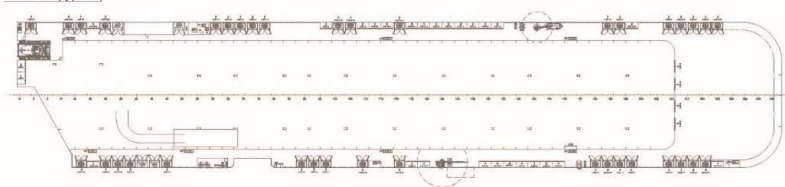
Transverse Section



Side View



Deck 14 (typical)



Deck 1 (typical)

