

## Multi-Purpose & Logs Vessel

### 32K TYPE

Ship's Name	Built	IMO No.	Flag	Ship's Name	Built	IMO No.	Flag
金广岭 JIN GUANG LING	2009	9487079	HONG KONG	中远武夷山 COSCO WU YI SHAN	2010	9418303	HONG KONG
金远岭 JIN YUAN LING	2009	9487081	HONG KONG	中远井冈山 COSCO JING GANG SHAN	2010	9418315	HONG KONG
金兴岭 JIN XING LING	2010	9487093	HONG KONG	中远太行山 COSCO TAI HANG SHAN	2010	9418327	HONG KONG
金旺岭 JIN WANG LING	2010	9487108	HONG KONG	中远昆仑山 COSCO KUN LUN SHAN	2010	9418339	HONG KONG



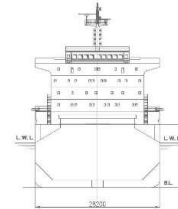
#### MAIN DATA

Classification	CCS, Bulk / Timber carrier
GRT/NRT	19,993 / 11,046 mt
Deadweight	31,898 mt
Max Draft (Summer)	10.00 m
LOA	177.50 m
Breadth Moulded	28.20 m
Depth to Main Deck	14.20 m
Height above Keel	44.83 m
Speed	13.90 kn

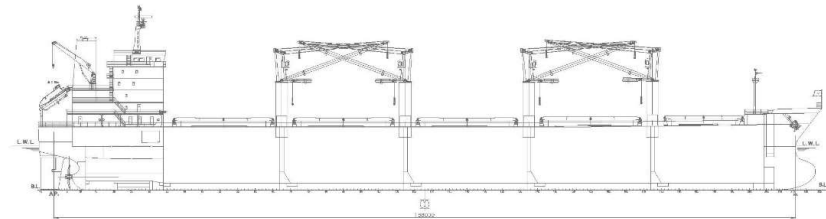
Cargo Hold Capacity	41,989 m³
Cranes	4 WMMP Cranes Situated Midships 30 mt x 4
Deck Strengths	20.00 mt on Tank Top 4.00 mt on Tween Deck 3.50 mt on Hatch Cover

\*All above details are in good faith but without guarantee.  
\*All details including speed are given in good faith and are "as-built" and are given without guarantee. They must not be used as basis for charterparties or contracts without COSCO SHIPPING SPECIALIZED CARRIERS CO., LTD.'s explicit written authority.

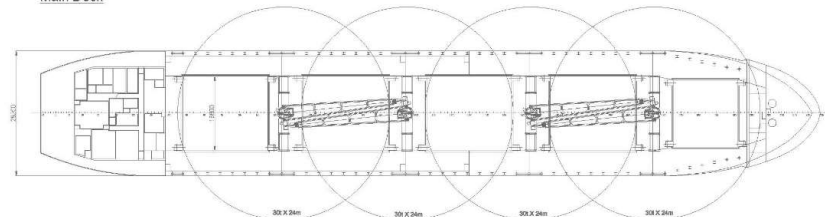
Transverse Section



Side View



Main Deck



Lower Hold

