

## Multi-Purpose & Heavy Lift Vessel

### DA TYPE I

Ship's Name	Built	IMO No.	Flag	Ship's Name	Built	IMO No.	Flag
新大中 XIN DA ZHONG	1998	9153874	P.R.CHINA	大富 DA FU	1998	9153898	PANAMA
大华 DA HUA	1998	9153886	PANAMA	新大强 XIN DA QIANG	1998	9153903	P.R.CHINA



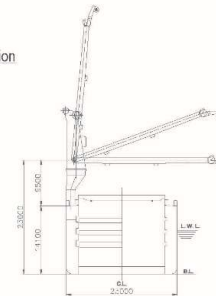
#### MAIN DATA

Classification	CCS - XIN DAZHONG / XIN DA QIANG, LR - DA HUA / DA FU, Strengthened for Heavy Cargoes Equipped with Container Securing Arrangement	Cargo Hold Capacity	22,775 m³
GRT/NRT	14,021 / 5,417 mt	Cranes	3 NMF Cranes Situated Portside 30 mt x 1, 250 mt x 2, Comb. 500 mt SWL
Deadweight	16,950 mt	Container intake	685 TEU (40 reefer plugs), 305 TEU (On Deck), 380 TEU (In Holds)
Max Draft (Summer)	9.12 m	Deck Strengths	11.00 mt on Tank Top 3.50 mt on Tween Deck 2.50 mt on Hatch Cover
LOA	153.00 m		
Breadth Moulded	23.00 m		
Depth to Main Deck	14.10 m		
Height above Keel	44.62 m		
Speed	15.00 kn		

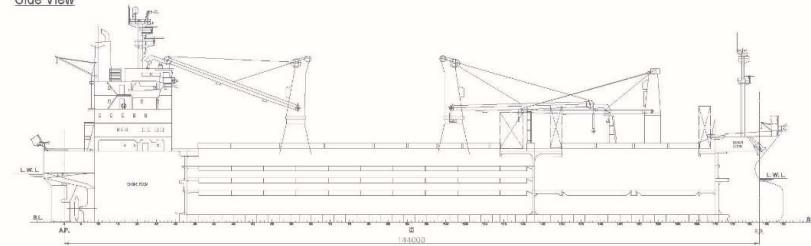
\*All above details are in good faith but without guarantee.

\*All details including speed are given in good faith and are "as-built" and are given without guarantee. They must not be used as basis for charterparties or contracts without COSCO SHIPPING SPECIALIZED CARRIERS CO., LTD.'s explicit written authority.

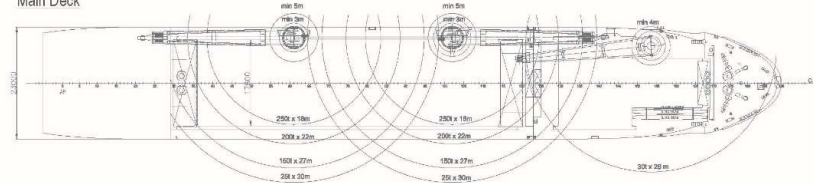
Transverse Section



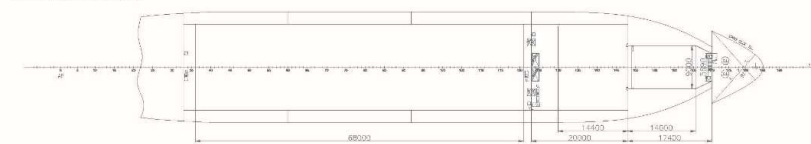
Side View



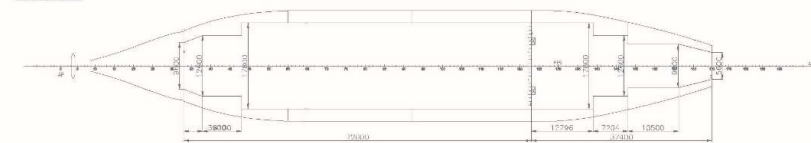
Main Deck



Tween Deck / Middle



Lower Hold



## Multi-Purpose & Heavy Lift Vessel

### DA TYPE II

Ship's Name	Built	IMO No.	Flag
大丹霞 DA DAN XIA	2009	9451290	HONG KONG
大紫云 DA ZI YUN	2010	9451305	HONG KONG
大玉霞 DA YU XIA	2011	9451317	HONG KONG
大翠云 DA CUI YUN	2011	9451329	HONG KONG

Ship's Name	Built	IMO No.	Flag
大青霞 DA QING XIA	2011	9451331	P.R.CHINA
大彤云 DA TONG YUN	2011	9451343	HONG KONG
大虹霞 DA HONG XIA	2012	9451355	HONG KONG
大彩云 DA CAI YUN	2012	9451367	HONG KONG



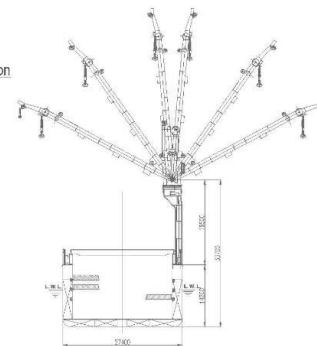
#### MAIN DATA

Classification	CCS, Ice Class B3, General Cargo Ship, Strengthened for Heavy Cargoes, Equipped with Container Securing Arrangement	Cargo Hold Capacity	38,968 m <sup>3</sup>
GRT/NRT	20,949 / 10,390 mt	Floor Space Deck	7,140 m <sup>2</sup>
Deadweight	28,370 mt	Cranes	3 Macgregor Cranes Situated Portside 45 mt x 1, 200 mt x 2, Comb. 400 mt SWL
Max Draft (Summer)	10.10 m	Container intake	1,648 TEU (100 reefer plugs), 973 TEU (On Deck), 675 TEU (In Holds)
LOA	166.50 m	Deck Strengths	20.00 mt on Tank Top 3.20 mt on Tween Deck 3.00 mt on Hatch Cover
Breadth Moulded	27.40 m		
Depth to Main Deck	14.20 m		
Height above Keel	47.71 m		
Speed	13.00 kn		

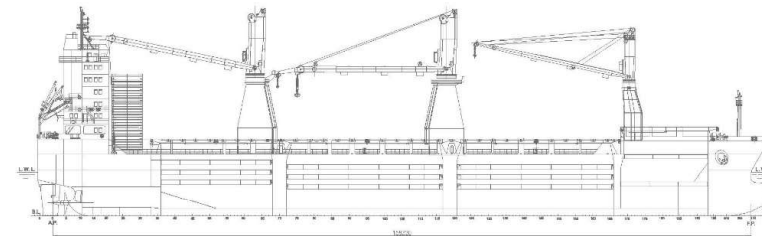
\* All above details are in good faith but without guarantee.

\* All details including speed are given in good faith and are "about" and are given without guarantee. They must not be used as basis for charterparties or contracts without COSCO SHIPPING SPECIALIZED CARRIERS CO., LTD.'s explicit written authority.

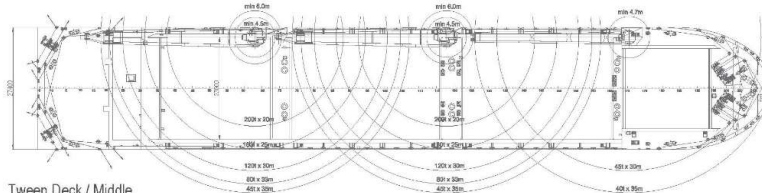
Transverse Section



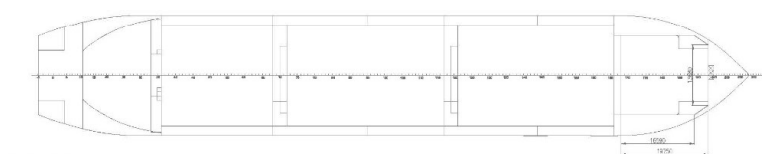
Side View



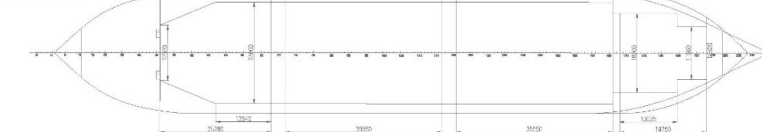
Main Deck



Tween Deck / Middle



Lower Hold



## Multi-Purpose & Heavy Lift Vessel

### DA TYPE III (a)

Ship's Name	Built	IMO No.	Flag	Ship's Name	Built	IMO No.	Flag
大安 DAAN	2013	9607825	LIBERIA	大泰 DA TAI	2013	9608386	LIBERIA
大康 DA KANG	2013	9608312	LIBERIA	大昌 DA CHANG	2013	9608398	LIBERIA



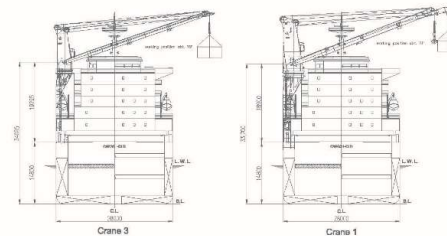
#### MAIN DATA

Classification	LR, +100 A1, Ice Class 1D, Strengthened for Heavy Cargoes, Equipped with Container Securing Arrangement	Cargo Hold Capacity	37,059 m <sup>3</sup>
GRT/NRT	22,566 / 9,788 mt	Floor Space Deck	13,137 m <sup>2</sup>
Deadweight	29,040 mt	Cranes	3 NMF Cranes Situated Portside 100 mt x 1, 350 mt x 2, Comb. 700 mt SWL
Max Draft (Summer)	10.55 m	Container intake	970 TEU (On Deck)
LOA	179.50 m	Deck Strengths	20.00 mt on Tank Top 3.00 mt on Tween Deck 3.50 mt on Hatch Cover
Breadth Moulded	28.00 m		
Depth to Main Deck	14.80 m		
Height above Keel	54.75 m		
Speed	15.00 kn		

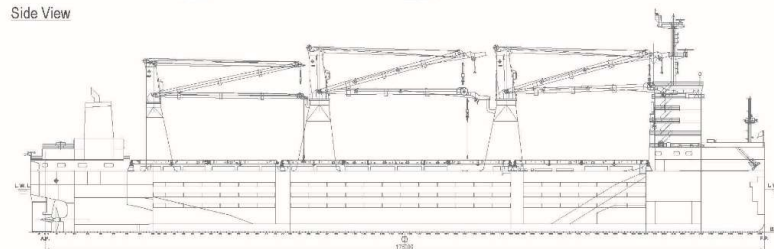
\* All above details are in good faith but without guarantee.

\* All details including speed are given in good faith and are "as-built" and are given without guarantee. They must not be used as basis for charterparties or contracts without COSCO SHIPPING SPECIALIZED CARRIERS CO., LTD.'s explicit written authority.

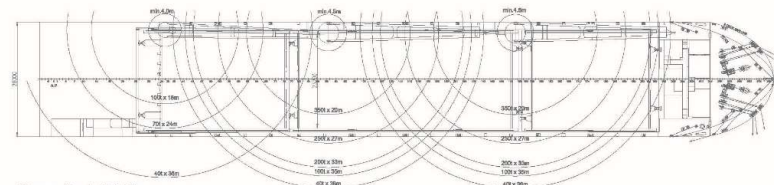
Transverse Section



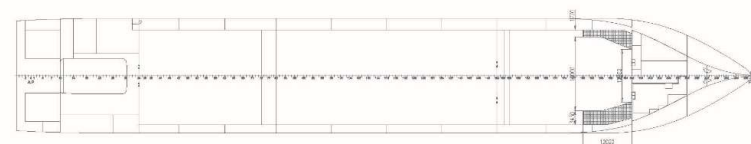
Side View



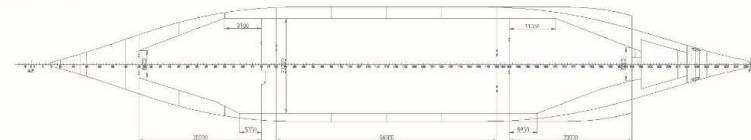
Main Deck



Tween Deck / Middle



Lower Hold





## Multi-Purpose & Heavy Lift Vessel

### DA TYPE III (b)

Ship's Name	Built	IMO No.	Flag	Ship's Name	Built	IMO No.	Flag
大德 DA DE	2014	9608403	P.R.CHINA	大信 DA XIN	2014	9608427	P.R.CHINA
大良 DA LIANG	2014	9608415	P.R.CHINA	大智 DA ZHI	2014	9608439	P.R.CHINA



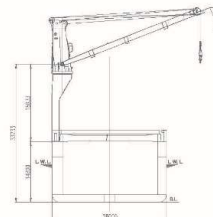
#### MAIN DATA

Classification	CCS, Ice Class B, General Cargo Ship, Strengthened for Heavy Cargoes, Equipped with Container Securing Arrangement	Cargo Hold Capacity	36,406 m³
GRT/NRT	21,828 / 9,495 mt	Floor Space Deck	10,130 m²
Deadweight	28,740 mt	Cranes	3 NMF Cranes Situated Portside 100 mt x 1, 350 mt x 2, Comb. 700 mt SWL
Max Draft (Summer)	10.52 m	Container intake	1,035 TEU (On Deck)
LOA	179.57 m	Deck Strengths	20.00 mt on Tank Top 3.00 mt on Tween Deck 3.50 mt on Hatch Cover
Breadth Moulded	28.00 m		
Depth to Main Deck	14.80 m		
Height above Keel	45.38 m		
Max Speed	15.00 kn		

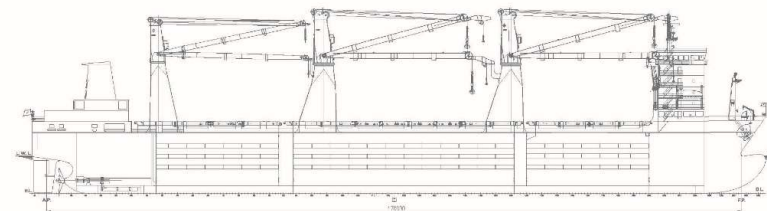
\* All above details are in good faith but without guarantee.

\* All details including speed are given in good faith and are "as-built" and are given without guarantee. They must not be used as basis for charterparties or contracts without COSCO SHIPPING SPECIALIZED CARRIERS CO., LTD.'s explicit written authority.

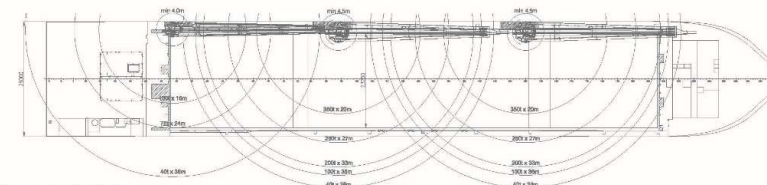
Transverse Section



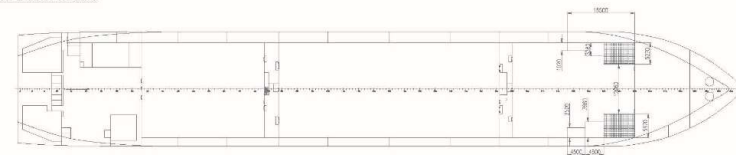
Side View



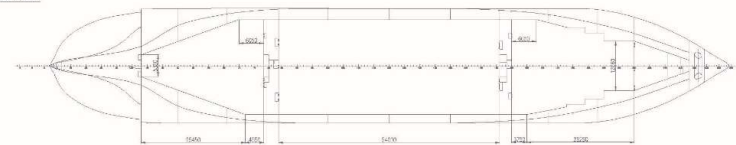
Main Deck



Tween Deck / Middle



Lower Hold



## Multi-Purpose & Heavy Lift Vessel

### DA TYPE III (c)

Ship's Name	Built	IMO No.	Flag	Ship's Name	Built	IMO No.	Flag
大吉 DA JI	2016	9768538	P.R.CHINA	大祥 DA XIANG	2017	9768552	P.R.CHINA
大庆 DA QING	2017	9768540	P.R.CHINA	大贵 DA GUI	2017	9768564	P.R.CHINA



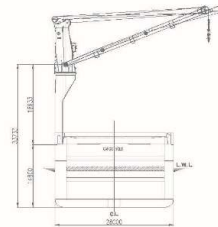
#### MAIN DATA

Classification	CCS, Ice Class B, General Cargo Ship, Strengthened for Heavy Cargoes, Equipped with Container Securing Arrangement	Cargo Hold Capacity	35,684 m <sup>3</sup>
GRT/NRT	21,992 / 9,390 mt	Floor Space Deck	10,036 m <sup>2</sup>
Deadweight	28,620 mt	Cranes	3 NMF Cranes Situated Portside 100 mt x 1, 350 mt x 2, Comb. 700 mt SWL
Max Draft (Summer)	10.52 m	Container intake	1,035 TEU (On Deck)
LOA	179.67 m	Deck Strengths	20.00 mt on Tank Top 3.00 mt on Tween Deck 3.50 mt on Hatch Cover
Breadth Moulded	28.00 m		
Depth to Main Deck	14.80 m		
Height above Keel	45.38 m		
Speed	13.60 kn		

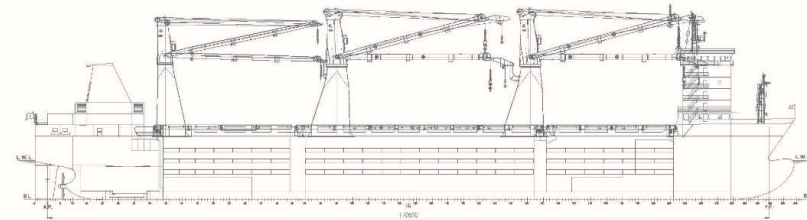
\* All above details are in good faith but without guarantee.

\* All details including speed are given in good faith and are "about" and are given without guarantee. They must not be used as basis for charterparties or contracts without COSCO SHIPPING SPECIALIZED CARRIERS CO., LTD.'s explicit written authority.

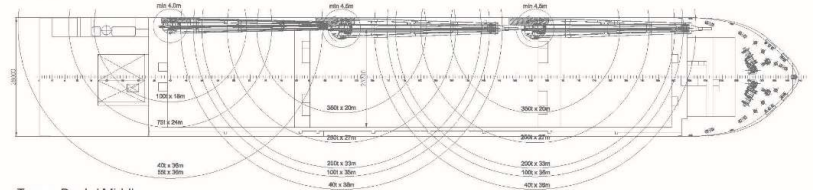
Transverse Section



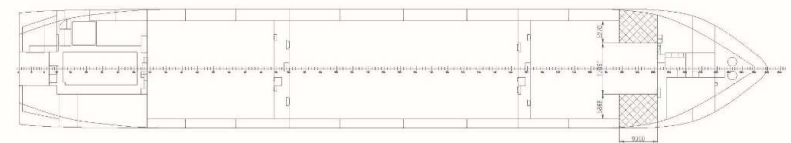
Side View



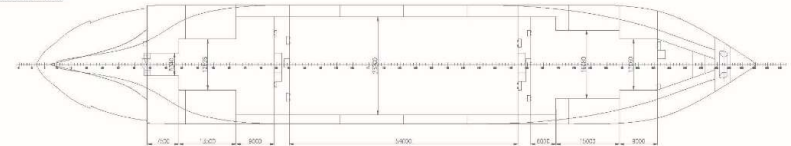
Main Deck



Tween Deck / Middle



Lower Hold



## Multi-Purpose Vessel

### SONG TYPE

Ship's Name	Built	IMO No.	Flag	Ship's Name	Built	IMO No.	Flag
凤凰松 FENG HUANG SONG	2009	9416757	LIBERIA	吉祥松 JI XIANG SONG	2011	9608922	P.R.CHINA
孔雀松 KONG QUE SONG	2010	9416769	LIBERIA	牡丹松 MU DAN SONG	2012	9608831	LIBERIA
麒麟松 QI LIN SONG	2010	9416771	LIBERIA	如意松 RU YI SONG	2012	9608934	P.R.CHINA
卧龙松 WO LONG SONG	2010	9416783	SINGAPOR	平安松 PING AN SONG	2012	9608946	P.R.CHINA
杜鹃松 DU JUAN SONG	2011	9608805	LIBERIA	木棉松 MU MIAN SONG	2012	9608843	LIBERIA
莲花松 LIAN HUA SONG	2011	9608829	LIBERIA	幸福松 XING FU SONG	2012	9608958	P.R.CHINA
芙蓉松 FU RONG SONG	2011	9608817	LIBERIA	紫荆松 ZI JING SONG	2012	9608910	LIBERIA



#### MAIN DATA

Classification	CCS, Ice Class B, General dry cargo Ship, Strengthened for Heavy Cargoes, Equipped with Container Securing Arrangements	Cargo Hold Capacity	38,480 m <sup>3</sup>
GRT/NRT	20,680 / 11,468 mt	Cranes	4 MacGregor Cranes Situated Midships 90 mt x 1, 45 mt x 2, 40 mt x 1, Max 180 mt SWL
Deadweight	27,400 mt	Container intake	1,371 TEU (50 reefer plugs) 765 TEU (On Deck), 606 TEU (In Holds)
Max Draft (Summer)	10.50 m	Deck Strengths	20.00 mt on Tank Top 3.50 mt on Tween Deck 2.50 mt on Hatch Cover
LOA	179.50 m		
Breadth Moulded	27.20 m		
Depth to Main Deck	14.50 m		
Height above Keel	49.25 m		
Speed	15.10 kn		

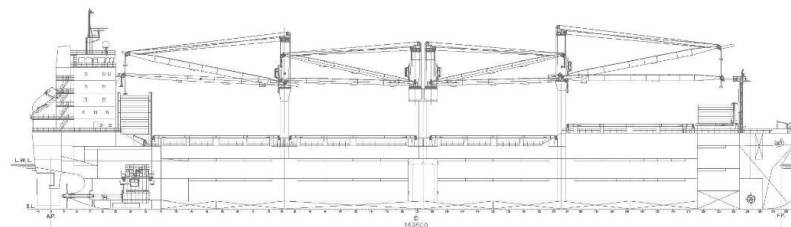
Remark: the cranes of MV FENG HUANG SONG and MV KONG QUE SONG are 4 MacGregor Cranes Situated Midships 45 mt x 2, 40 mt x 2, Combinable up to 90 mt SWL.

\* All above details are in good faith but without guarantee.  
\* All details including speed are given in good faith and are "about" and are given without guarantee. They must not be used as basis for charterparties or contracts without COSCO SHIPPING SPECIALIZED CARRIERS CO., LTD.'s explicit written authority.

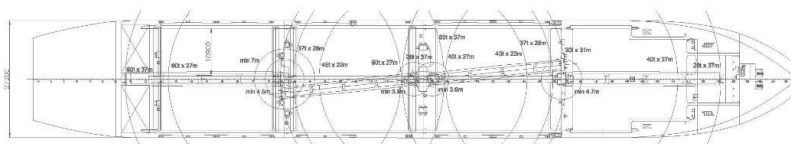
Transverse Section



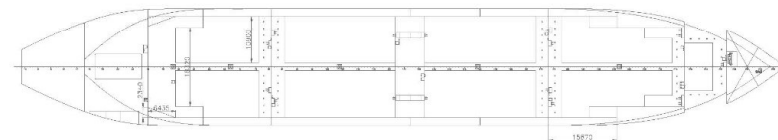
Side View



Main Deck



Tween Deck / Middle



Lower Hold





## Multi-Purpose Vessel

### XING TYPE

Ship's Name	Built	IMO No.	Flag	Ship's Name	Built	IMO No.	Flag
天王之星 TIAN WANG ZHI XING	2007	9464223	P.R.CHINA	海王之星 HAI WANG ZHI XING	2008	9464235	P.R.CHINA



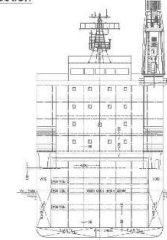
#### MAIN DATA

Classification	CCS, General Cargo Ship, Strengthened for Heavy Cargoes, Equipped with Container Securing Arrangement	Cargo Hold Capacity	13,350 m³
GRT/NRT	7,460 / 3,295 mt	Cranes	2 WMMP Cranes Situated Portside 40 mt x 2
Deadweight	9,106 mt	Container intake	abt 630 TEU (44 reefer plugs) 366 TEU (On Deck), 264 TEU (In Holds)
Max Draft (Summer)	7.20 m	Deck Strengths	14.00 mt on Tank Top 3.50 mt on Tween Deck 3.50 mt on Hatch Cover
LOA	122.20 m		
Breadth Moulded	19.80 m		
Depth to Main Deck	10.70 m		
Height above Keel	39.60 m		
Speed	13.00 kn		

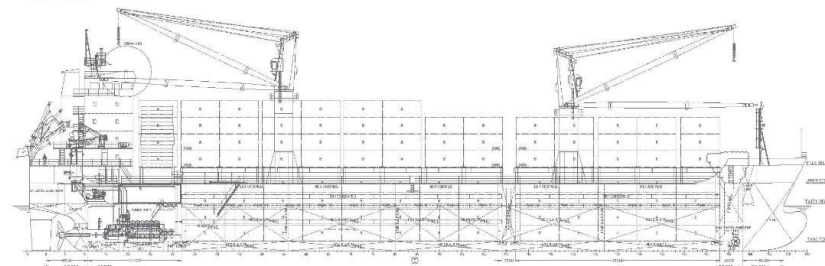
\* All above details are in good faith but without guarantee.

\* All details including speed are given in good faith and are "about" and are given without guarantee. They must not be used as basis for charterparties or contracts without COSCO SHIPPING SPECIALIZED CARRIERS CO., LTD.'s explicit written authority.

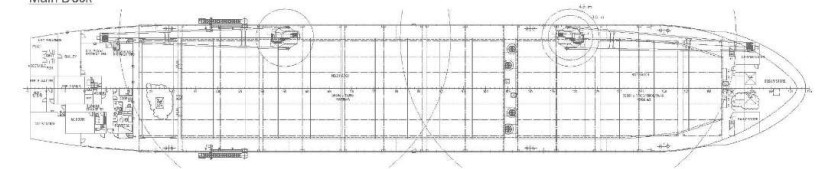
Transverse Section



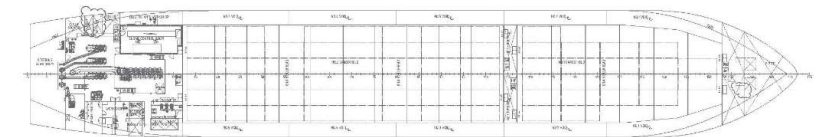
Side View



Main Deck



Tween Deck / Middle



Lower Hold



## Multi-Purpose Vessel

### YONG SHENG (Ice\*)

Ship's Name	Built	IMO No.	Flag
永盛 YONG SHENG	2002	9243813	HONG KONG



#### MAIN DATA

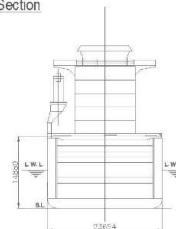
Classification	CCS, Ice Class B1, +100A1, Strengthened for Heavy Cargoes, Equipped with Container Securing Arrangement	Cargo Hold Capacity	26,840 m³
GRT/NRT	14,357 / 6,985 mt	Cranes	3 LIEBHERR Cranes Situated Portside, 60 mt x 3
Deadweight	19,561 mt	Container intake	1,226 TEU (110 reefer plugs) 696 TEU (On Deck), 530 TEU (In Holds)
Max Draft (Summer)	8.42 m	Deck Strengths	20.00 mt on Tank Top 5.00 mt on Tween Deck 1.75 mt on Hatch Cover
LOA	159.99 m		
Breadth Moulded	23.70 m		
Depth to Main Deck	11.95 m		
Height above Keel	41.10 m		
Speed	14.00 kn		

\* All above details are in good faith but without guarantee.

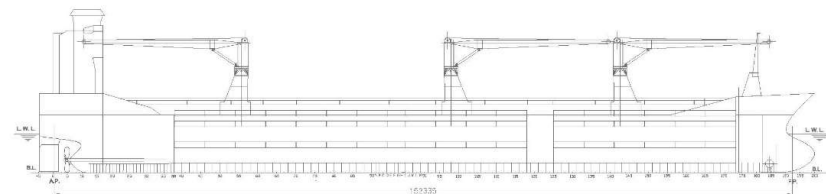
\* All details including speed are given in good faith and are "about" and are given without guarantee. They must not be used as basis for charterparties or contracts without COSCO SHIPPING SPECIALIZED CARRIERS CO., LTD.'s explicit written authority.



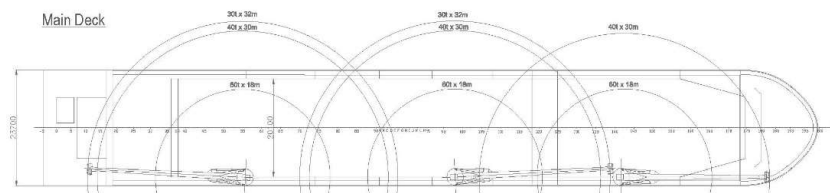
Transverse Section



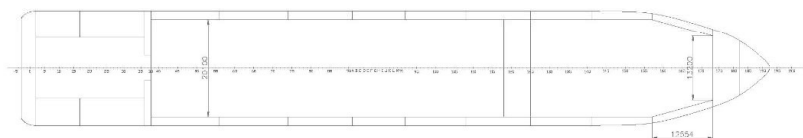
Side View



Main Deck



Tween Deck / Middle



Lower Hold

