

## Semi-submersible Vessel

### XIN GUANG HUA



Ship's Name	Built	IMO No.	Flag
新光华 XIN GUANG HUA	2016	9751573	HONG KONG



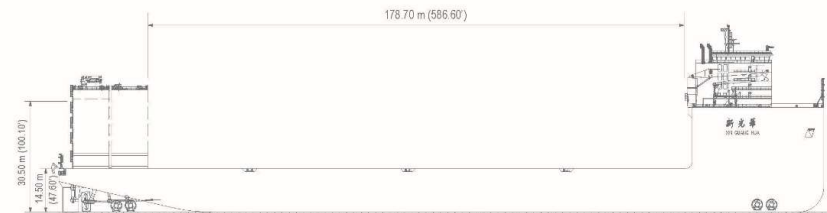
#### MAIN DATA

Classification	CCS, Ice Class B2, Semi-submersible Heavy Lift Vessel	Ballast System	4* 8,500 m³ / hr air compressors, 2* 1,500 m³ / hr pumps, 2* 550 m³ / hr pumps, 112 ballast tanks, including top tanks, double bottom tanks, center tanks and side tanks enabling the vessel to better control motions and accelerations
GRT/NRT	84,503 / 25,350 mt		
Deadweight	97,690 mt		
Loaded Draft	10.50 m	Bulkheads	8 Transverse bulkheads, Longitudinal bulkheads - 1 at centerline and 2 at 17.00 m from centerline
LOA	255.00 m	Power Supply to Cargo	440 V, 60 Hz, 1,900 A during transit
Breadth Moulded	68.00 m	Accommodation for 100 persons	
Hull Depth	14.50 m		
Speed	13.50 kn		
Cargo Deck	208.40 x 68.00 m		
Deck Submersion	16.00 m		
Casings	12.00 x 7.65 x 26.30 m, all four casings movable		
Allowable load on maindeck	25.00 tons / m² overall, 125.00 tons / m on web frames		

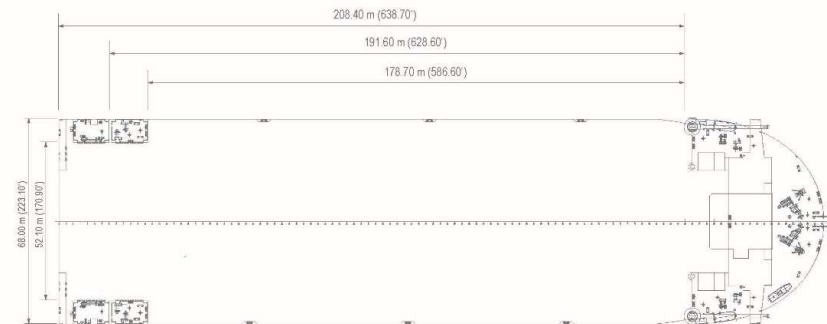
\*All above details are in good faith but without guarantee.

\*All details including speed are given in good faith and are "about" and are given without guarantee. They must not be used as basis for charterparties or contracts without COSCO SHIPPING SPECIALIZED CARRIERS CO., LTD.'s explicit written authority.

Side View



Main Deck



## Semi-submersible Vessel

### XIN YAO HUA



Ship's Name	Built	IMO No.	Flag
新耀华 XIN YAO HUA	2022	9925980	LIBERIA



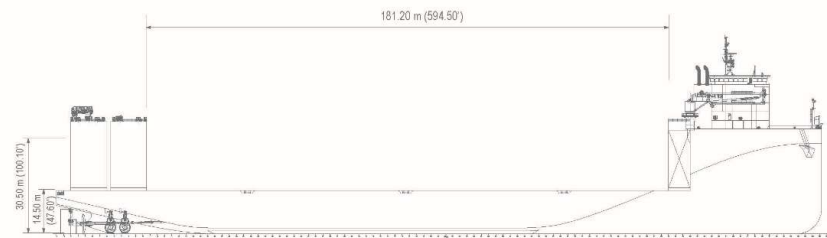
#### MAIN DATA

Classification	CCS, Ice Class B, Semi-submersible Vessel	Ballast System	4* 6,900 m³ / hr air compressors, 2* 1,500 m³ / hr pumps, 112 ballast tanks, including top tanks, double bottom tanks, center tanks and side tanks enabling the vessel to better control motions and accelerations
GRT/NRT	72,275 / 21,682 mt	Bulkheads	8 Transverse bulkheads, Longitudinal bulkheads – 1 at centerline and 2 at 14.40 m from centerline
Deadweight	81,790 mt	Power Supply to Cargo	450 V, 60 HZ, 1,000 KVA, 230 V, 60 HZ, 200 A
Loaded Draft	10.50 m	Accommodation for 57 persons	
LOA	255.00 m		
Breadth Moulded	57.00 m		
Hull Depth	14.50 m		
Speed	14.50 kn		
Cargo Deck	211.20 x 57.00 m		
Deck Submersion	16.00 m		
Casings	4 casings, each 12.00 x 7.20 x 23.00 m, Two casings can be stowed inside forward recess		
Allowable load on maindeck	25.00 tons / m² overall, 125.00 tons / m on web frames		

\* All above details are in good faith but without guarantee.

\* All details including speed are given in good faith and are "about" and are given without guarantee. They must not be used as basis for charterparties or contracts without COSCO SHIPPING SPECIALIZED CARRIERS CO., LTD.'s explicit written authority.

Side View



Main Deck



## Semi-submersible Vessel

### X-CLASS



Ship's Name	Built	IMO No.	Flag	Ship's Name	Built	IMO No.	Flag
祥云 XIANG YUN KOU	2011	9483097	P.R.CHINA	祥和 XIANG HE KOU	2016	9752856	HONG KONG
祥瑞 XIANG RUI KOU	2011	9483102	P.R.CHINA	祥安 XIANG AN KOU	2021	9888089	LIBERIA



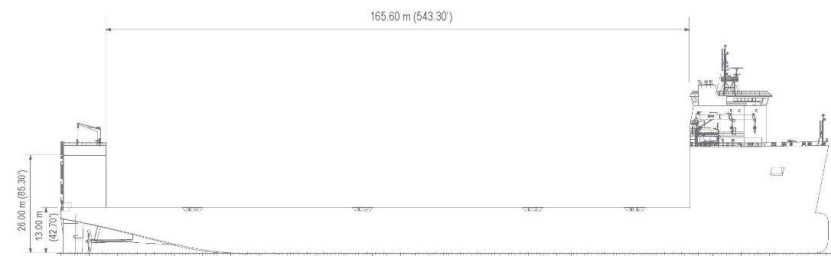
#### MAIN DATA

Classification	CCS, Ice Class B, Semi-submersible Heavy Lift Vessel	Ballast System	4* 6,600 m³ / hr air compressors, 2* 1,200 m³ / hr pumps, 2* 160 m³ / hr pumps, 61 ballast tanks, including top tanks, double bottom tanks, center tanks and side tanks enabling the vessel to better control motions and accelerations
GRT/NRT	38,935 / 11,680 mt	Bulkheads	7 Transverse bulkheads, Longitudinal bulkheads – 1 at centerline and 2 at 11.38 m from centerline
Deadweight	48,480 mt	Power Supply	440 V, 60 Hz, 1,550 A during transit to Cargo
Loaded Draft	9.68 m	Accommodation	for 24 persons in addition to crew
LOA	216.70 m		
Breadth Moulded	43.00 m		
Hull Depth	13.00 m		
Speed	13.50 kn		
Cargo Deck	177.60 x 43.00 m		
Deck Submersion	13.00 m		
Casings	12.00 x 6.75 x 17.40 m		
Allowable load on maindeck	25.00 tons / m²		

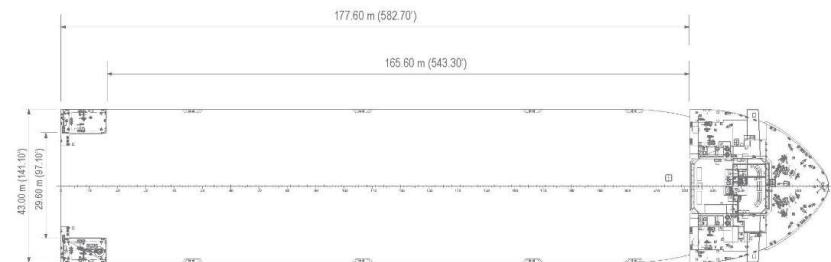
\*All above details are in good faith but without guarantee.

\*All details including speed are given in good faith and are "about" and are given without guarantee. They must not be used as basis for charterparties or contracts without COSCO SHIPPING SPECIALIZED CARRIERS CO., LTD.'s explicit written authority.

Side View



Main Deck



## Semi-submersible Vessel

### K-CLASS



Ship's Name	Built	IMO No.	Flag	Ship's Name	Built	IMO No.	Flag
泰安口 TAI AN KOU	2002	9223277	P.R.CHINA	康盛口 KANG SHENG KOU	2003	9223289	P.R.CHINA



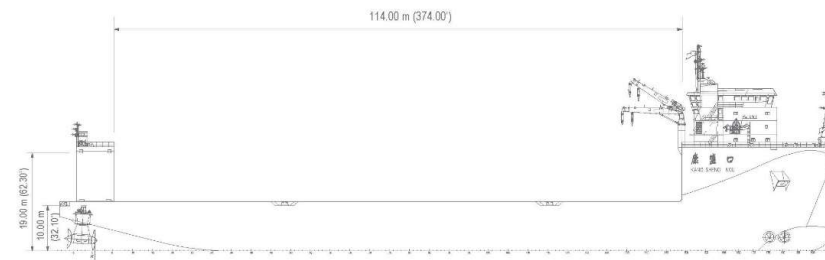
#### MAIN DATA

Classification	CCS, Ice Class B, Semi-submersible Heavy Lift Vessel	Ballast System	4* 3,215 m³ air compressors, 44 ballast tanks, including top tanks, double bottom tanks, center tanks and side tanks enabling the vessel to better control motions and accelerations
GRT/NRT	15,840 / 4,752 mt	Bulkheads	5 Transverse bulkheads, Longitudinal bulkheads - 1 at centerline, 2 at 8.80 m and 2 at 16.10 m from centerline
Deadweight	20,250 mt	Power Supply to Cargo	450 V, 60 Hz, 400 kW, 600 A during transit, 380 V, 50 Hz, 250 kW, 400 A during transit
Loaded Draft	7.40 m	Accommodation	for 12 persons in addition to crew
LOA	156.00 m		
Breadth Moulded	36.00 m		
Hull Depth	10.00 m		
Speed	13.50 kn		
Cargo Deck	125.00 x 36.00 m		
Deck Submersion	9.00 m		
Casings	7.60 x 4.95 x 11.80 m		
Allowable load on maindeck	18.00 tons / m²		

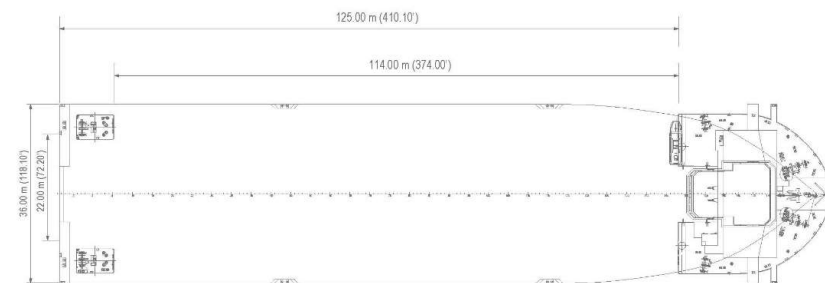
\*All above details are in good faith but without guarantee.

\*All details including speed are given in good faith and are "about" and are given without guarantee. They must not be used as basis for charterparties or contracts without COSCO SHIPPING SPECIALIZED CARRIERS CO., LTD.'s explicit written authority.

Side View



Main Deck





## Semi-submersible Vessel

### ZHI YUAN KOU



Ship's Name	Built	IMO No.	Flag
致远口 ZHI YUAN KOU	2012	9639452	P.R.CHINA



#### MAIN DATA

Classification	CCS, Semi-submersible Heavy Lift Vessel	Ballast System	4* 3,200 m <sup>3</sup> / hr air compressors, 62 ballast tanks, including top tanks, double bottom tanks, center tanks and side tanks enabling the vessel to better control motions and accelerations
GRT/NRT	32,793 / 9,838 mt	Bulkheads	6 Transverse bulkheads, Longitudinal bulkheads - 1 at centerline, 2 at 11.20 m from centerline
Deadweight	37,900 mt	Power Supply	380 V, 50 Hz, 700 KW during transit to Cargo
Loaded Draft	8.80 m	Accommodation	for 12 persons in addition to crew
LOA	195.20 m		
Breadth Moulded	41.50 m		
Hull Depth	12.00 m		
Speed	12.00 kn		
Cargo Deck	153.60 x 41.50 m		
Deck Submersion	11.00 m		
Casings	17.60 x 8.75 x 16.60 m		
Allowable load on maindeck	20.00 tons / m <sup>2</sup>		

\*All above details are in good faith but without guarantee.

\*All details including speed are given in good faith and are "as-built" and are given without guarantee. They must not be used as basis for charterparties or contracts without COSCO SHIPPING SPECIALIZED CARRIERS CO., LTD.'s explicit written authority.

Side View



Main Deck



# Semi-submersible Vessel

## RED ZED



Ship's Name	Built	IMO No.	Flag	Ship's Name	Built	IMO No.	Flag
华洋1 RED ZED I	2015	9633977	LIBERIA	华洋2 RED ZED II	2015	9633989	LIBERIA

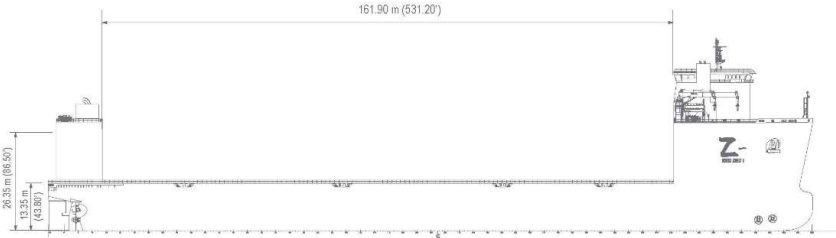


### MAIN DATA

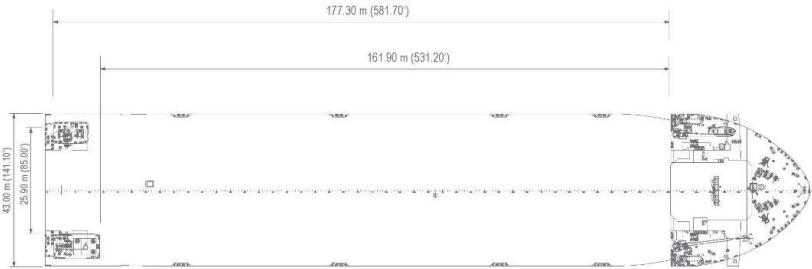
Classification	ABS-RED ZED I/DNV-RED ZED II, Semi-submersible Vessel	Ballast System	26,000 m <sup>3</sup> / hr (consisting of 4 air compressors), 2,000 m <sup>3</sup> / hr (consisting of 2 pumps), 74 ballast tanks, including top tanks, double bottom tanks, center tanks and side tanks enabling the vessel to better control motions and accelerations
GRT/NRT	37,820 / 11,346 mt	Bulkheads	8 Transverse bulkheads, Longitudinal bulkheads -2 at 11.38 m from centerline + 1 at centerline
Deadweight	51,960 mt	Power Supply	690 V, 60 HZ, 1,000 KVA, 440 V, 60 HZ, 100 KVA to Cargo
Loaded Draft	10.00 m	Accommodation	for 50 persons
LOA	216.70 m		
Breadth Moulded	43.00 m		
Hull Depth	13.50 m		
Speed	11.00 kn		
Cargo Deck	177.30 x 43.00 m		
Deck Submersion	13.00 m		
Casings	SB casing is fixed, PS can be removed		
Allowable load on maindeck	25.00 tons / m <sup>2</sup>		

\* All above details are in good faith but without guarantee.  
\* All details including speed are given in good faith and are "about" and are given without guarantee. They must not be used as basis for charterparties or contracts without COSCO SHIPPING SPECIALIZED CARRIERS CO., LTD.'s explicit written authority.

Side View



Main Deck



## Semi-submersible Vessel

### ZHEN HUA 33



Ship's Name	Built	IMO No.	Flag
振华33 ZHEN HUA 33	2017	9808223	P.R.CHINA



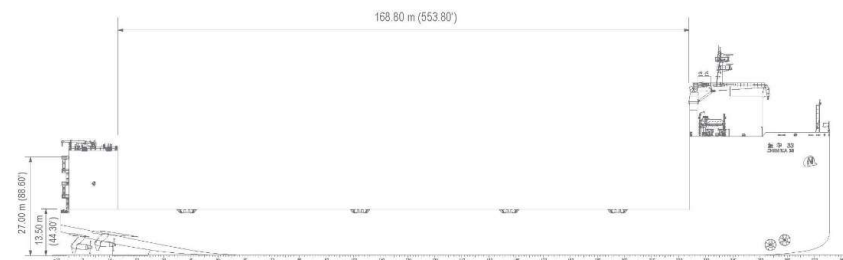
#### MAIN DATA

Classification	CCS, Ice Class B, Semi-submersible Heavy Lift Vessel	Ballast System	26,000 m <sup>3</sup> / hr (consisting of 4 air compressors), 8,000 m <sup>3</sup> / hr (consisting of 7 pumps), 79 ballast tanks, including top tanks, double bottom tanks, center tanks and side tanks enabling the vessel to better control motions and accelerations
GRT/NRT	43,788 / 13,136 mt		
Deadweight	50,510 mt		
Loaded Draft	10.00 m	Bulkheads	10 Transverse bulkheads, Longitudinal bulkheads -2 at 11.38 m from centerline + 1 at centerline
LOA	227.00 m	Power Supply to Cargo	480 V, 60 Hz, 550 KVA during transit
Breadth Moulded	43.00 m	Accommodation for 55 persons	
Hull Depth	13.50 m		
Speed	13.00 kn		
Cargo Deck	185.60 x 43.00 m		
Deck Submersion	13.50 m		
Casings	14.40 x 6.12 x 17.40 m		
Allowable load on maindeck	25.00 tons / m <sup>2</sup>		

\* All above details are in good faith but without guarantee.

\* All details including speed are given in good faith and are "about" and are given without guarantee. They must not be used as basis for charterparties or contracts without COSCO SHIPPING SPECIALIZED CARRIERS CO., LTD.'s explicit written authority.

Side View



Main Deck

